

All Passy Muir® Valves have the patented, bias-closed position no-leak design, are designed to fit the universal 15mm hub of tracheostomy tubes, including neonatal and pediatric tubes, and can be used interchangeably by tracheostomized and ventilator dependent patients with the exception of the PMV® 2020. All Passy Muir products are latex free and made in the USA.



PMV® 007 (Aqua Color™)

The PMV® 007 (Aqua Color™) (15mm I.D./22mm O.D.) is designed to be inserted into standard disposable tubing in a ventilator circuit. The PMV 007 may be attached to a standard 15mm tracheostomy tube hub or connected to an in-line suction system through the use of a PMV® AD1522™ or other 15mm x 22mm step-down adapter. The PMV can be used on or off of the ventilator. Latex free.



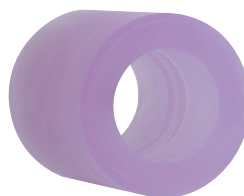
PMV® AD1522™ Step-Down Adapter

PMV® AD1522™ Step-Down adapter (15mm O.D./22mm I.D.) provides clinicians with a way to easily connect the Passy Muir Valve in-line while the patient is mechanically ventilated. Color coded for use with the PMV® 007 (Aqua Color™), the adapter provides a secure connection between the Passy Muir Valve and ventilator tubing, closed suction systems, or other adapters. Provided in resealable package of 5 units. Conforms to ISO 5356-1. Latex free.



PMV® 2001 (Purple Color™)

The PMV® 2001 (Purple Color™) (15mm I.D./23mm O.D.) attaches to a standard 15mm tracheostomy tube hub. Low profile, lightweight, and purple in color for easy identification, the PMV 2001 can be connected to a ventilator with the PMV® AD1522™ or other 22mm flexible silicone adapter. Packaged with one Secure-It® that connects the Valve to a tracheostomy tie to help prevent loss. Latex free.



PMV® AD22™ Silicone Adapter

PMV® AD22™ Flexible Silicone Adapter designed for a variety of uses within a ventilator circuit. Color coded for use with the PMV® 2001 (Purple Color™), the adapter provides a secure connection between Passy Muir Valve and tubing, closed suction systems, or other adapters. Stretches to fit 22mm. Provided in resealable package of 3 units. Latex free.



PMV® 2000 (clear)

The PMV® 2000 (clear) (15mm I.D./23mm O.D.) attaches to a standard 15mm tracheostomy tube hub. Lightweight, low profile, and manufactured from clear materials to be less noticeable, the PMV 2000 can be connected to a ventilator with the PMV® AD22™ or other 22mm flexible silicone adapters. Packaged with one Secure-It®. Latex free.



DigiSil™ Adapter

The 15mm DigiSil™ Adapter is a non-sterile, lightweight, single patient use, stretch-to-fit adapter for placement on the 15mm hub of a tracheostomy tube with a duckbill designed inner cannula to allow finger occlusion. Comes with a Secure-It® to secure the adapter to a trach tie and prevent loss. Not for use with mechanical ventilation or Passy Muir Valves. Latex free.



PMV® 2020 (clear)

The PMV® 2020 (clear) (15mm I.D./23mm O.D.) is designed to attach to a metal Jackson Improved tracheostomy tube (sizes 4, 5, 6 or equivalent) through the use of a PMA 2020-S Adapter. Packaged with one PMA 2020-S Adapter and Secure-It®. Not for use in-line with a mechanical ventilator. Latex free.



DB15™ Adapter

The PM-DB15™ Adapter is a non-sterile, lightweight, single patient use, low-profile adapter for placement on the 15mm hub of a tracheostomy tube with a duckbill designed inner cannula to allow finger occlusion or placement of a Passy Muir Valve, models PMV®2000 or PMV 2001. Not for use with mechanical ventilation. Provided in resealable package of 3 units. Latex free.



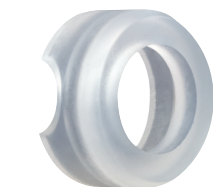
PMV® 005 (white)

The PMV® 005 (white) (15mm I.D./23mm O.D.) is the original Passy Muir® Valve. The PMV 005 may be attached to a standard 15mm tracheostomy tube hub or connected to a ventilator through the use of a PMV® AD22™ or other 22mm flexible silicone adapter. Not compatible with Secure-It or PMA® 2000 Oxygen Adapter. Latex free.



PMA® 2000 (clear)

The PMA® 2000 Oxygen Adapter is a small, lightweight adapter designed to deliver low flow oxygen (up to 6L/min) to the face of the Passy Muir® Valve. Easily snaps onto the PMV® 2000 (clear) and PMV® 2001 (Purple Color™), providing a portable and comfortable method of delivering low flow oxygen to tracheostomy patients. Latex free.



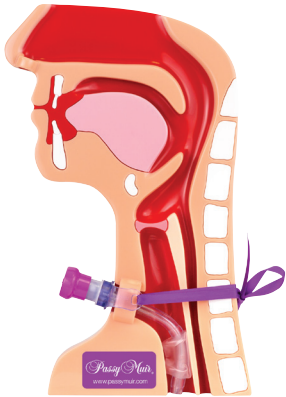
PMA® 2020-S Adapter (clear)

The PMA® 2020-S Adapter is required to attach the PMV® 2020 to a metal Jackson Improved tracheostomy tube. This package of 3 adapters provides additional adapters in case of damage or loss of the original adapter packaged with the PMV 2020. Latex free.



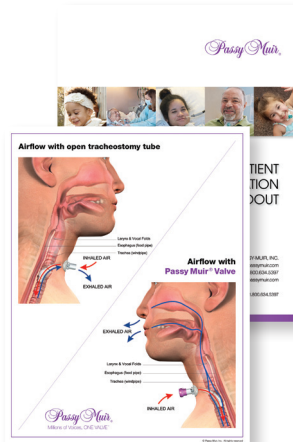
PMV® Secure-It®

The PMV® Secure-It® connects the PMV® 2000 (clear), PMV® 2001, PMV® 2020 (clear), and DigiSil™ adapter to a tracheostomy tie to help prevent loss. Provided in a package containing 5 replacement Secure-It units. Latex free.



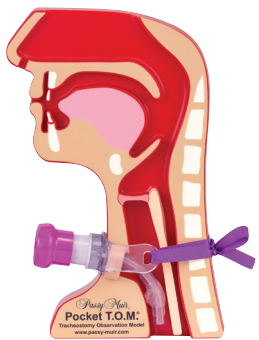
**Tracheostomy T.O.M.®
Tracheostomy Observation Model**

Tracheostomy T.O.M.® Tracheostomy Observation Model is designed for use by healthcare practitioners to educate students, families, patients, and clinicians about tracheostomy in the adult airway and the proper application of the Passy Muir® Valve. Packaged with helpful educational accessories, the kit includes three demonstration Passy Muir® Valves, a cuffed tracheostomy tube, and a nasogastric tube.



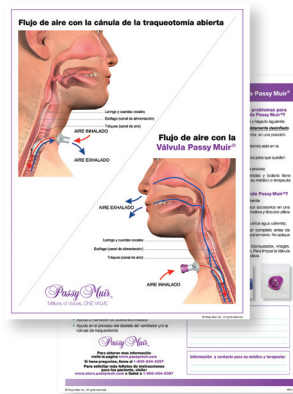
Patient Education Handout

These tear sheets, feature colorful graphics, easy-to-read instructions, and helpful information regarding tracheostomy. The front page illustrates cross section view of the head and neck anatomy with tracheostomy placement and airflow with and without the Passy Muir® Valve. The back page features information regarding the application of the Passy Muir Valve, clinical benefits, troubleshooting, and care and cleaning.



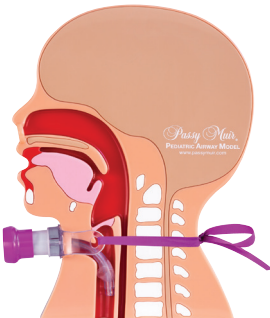
**Pocket T.O.M.®
Tracheostomy Observation Model**

Convenient pocket-sized version of Tracheostomy T.O.M., designed for use by healthcare practitioners to educate students, families, patients, and clinicians about tracheostomy and the proper application of the Passy Muir® Valve. Packaged with helpful educational accessories, the kit includes three demonstration Passy Muir® Valves, a cuffed tracheostomy tube, and syringe for education and practice related to use of speaking valves with and without a ventilator.



**Patient Education Sheets
Spanish Language**

These full-color information sheets have colorful graphics, easy-to-read instructions, and helpful information regarding tracheostomy. The front page illustrates cross section view of the head and neck anatomy with tracheostomy placement and airflow with and without the Passy Muir® Valve. The back page features information regarding the application of the Passy Muir Valve, clinical benefits, troubleshooting, and care and cleaning.



**Tracheostomy P.A.M.®
Pediatric Airway Model**

Conveniently sized, and packaged with helpful educational accessories, P.A.M. is designed for use by healthcare practitioners to educate students, families, patients, and clinicians about tracheostomy in the pediatric airway.



**Pocket Guide
Assessment & Placement Guide/
Accessories & Connections Guide**

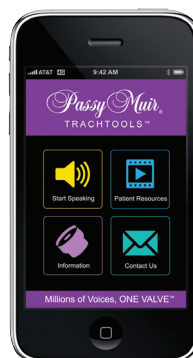
Convenient pocket-size guide, provides valuable information regarding tracheostomy, quick tips for assessment and placement of the Passy Muir® Valve, helpful product information, ventilator circuit connections, and more.



NEW Toby Tracheapuppet™

*A therapist's best friend
and a child's best companion*

Featuring a pediatric tracheostomy tube and Passy Muir® Valve for demonstration and education, the new Toby Tracheapuppet™ plush therapy hand puppet is ideal for interaction with young patients, facilitating vocalization and therapeutic play.



**Updated TRACHTOOLS™
Communication App v1.3**

Now in English & Spanish

Our updated tracheostomy patient-friendly app enables communication at the touch of a button. Featuring an intuitive menu, user-defined voice options, and new prerecorded phrases translation feature, this app is perfect for patients, families and caregivers.

